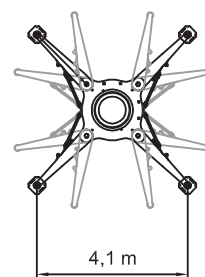
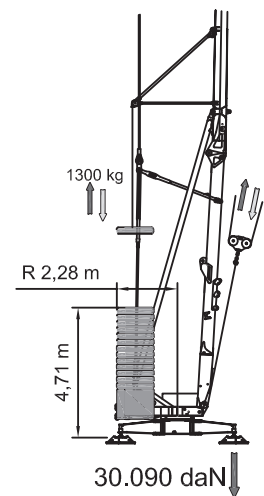


	400V (±10%) 50 Hz		18kVA			
	m/l'	▶	▶▶	▶▶▶	▶▶▶▶	
	kg	6,3	21	31	48	
		15 (Inverter)				
	m/l'	▶	▶▶	▶▶▶		
	kg	17.8	28.6	53.5 (↗39.3)		
		3 (Inverter)				
	n/l'	▶	▶▶	▶▶▶		
	kg	0.17	0.42	0.85		
		3,7 (Inverter)				
	min	▶		15.240 kg		5.200 kg + 16.900 kg
	kW 3	12				
	5200 kg	2600 kg	0 kg			
P1	8750 kg 8020 kg *	6616 kg 5916 kg *	4483 kg 3811 kg *			
P2	11690 kg 12420 kg *	11224 kg 11924 kg *	10757 kg 11429 kg *			



Alle technischen Angaben ohne Gewähr. Irrtümer und Änderungen vorbehalten.
All technical data is without guarantee, errors and changes are reserved.

Am Dornbusch 10
64390 Erzhausen
www.eurogru.de

Telefon: +49 (0) 6150 13440
Fax: +49 (0) 6150 7002
Email: kontakt@eurogru.de

EUROGRU[®]
BAUKRANE SEIT 1962