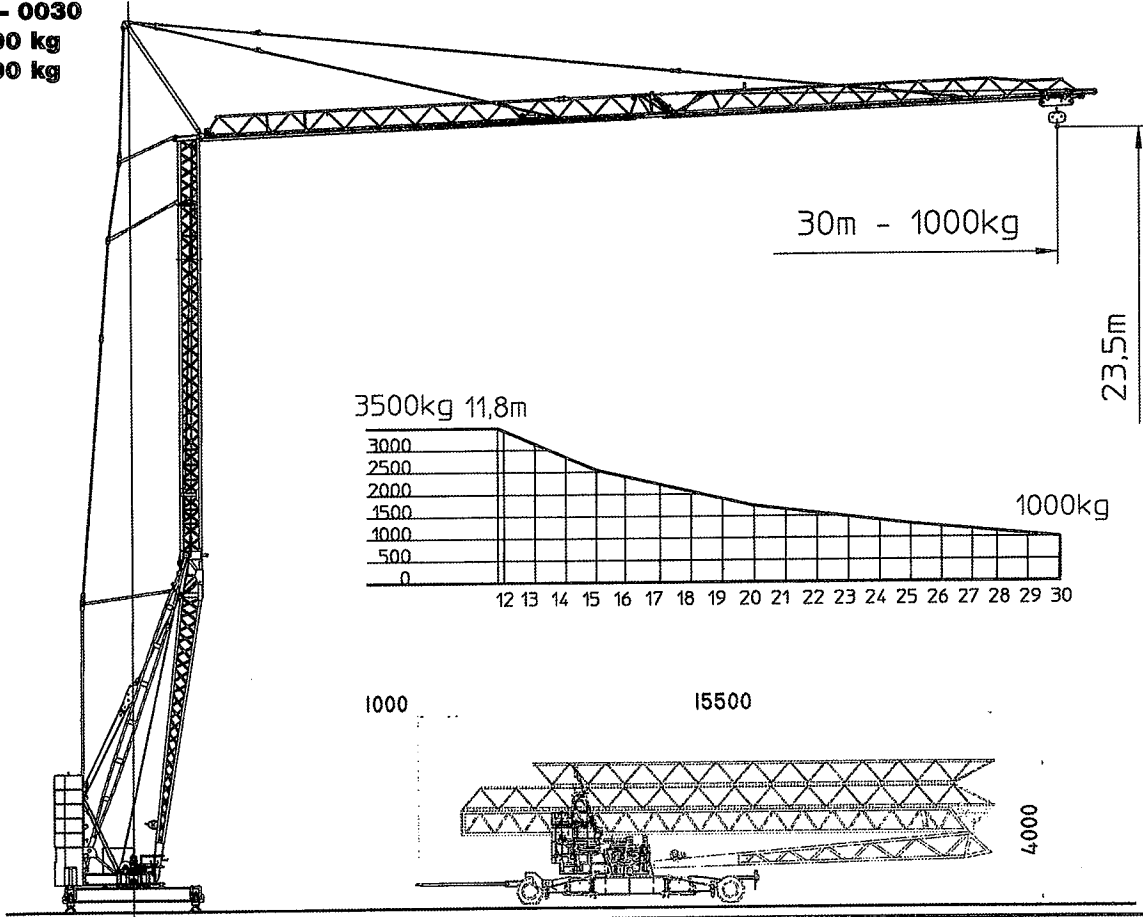
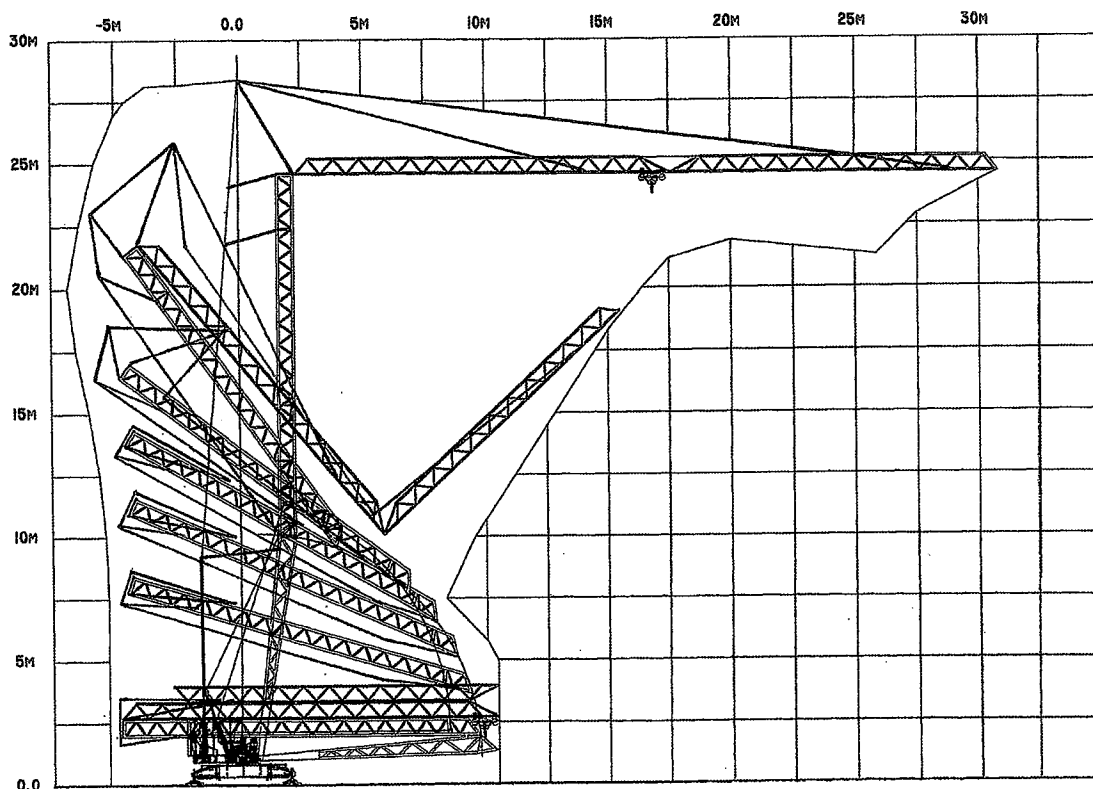


TK 3010/3

BGL 2102 - 0030
 30 m - 1000 kg
 max. - 3500 kg







Montage - Platzbedarfsdiagramm
 Erection - Space required diagram
 Montage - Surface utile



TK 3010/3

Leistungsdaten Performance data <i>Details techniques</i>	Ausladung (m) Radius <i>Portée</i>	Tragkraft (kg) Lifting capacity <i>Capacité</i>	Max. Tragkraft (kg) Lifting capacity max. <i>Capacité max.</i>
Ausleger 30 m Jib 30 m / <i>Flèche 30 m</i>	30	1000	3500

Geschwindigkeiten Speeds <i>Vitesses</i>	Heben Lifting <i>Levage</i>					
		m/min.	kg			
			42	1800		
			30	2500		
→		21	3500			
	Katzfahren Trolleying / <i>Distribution</i>			m/min.	20/40	
	Drehen stufenlos Slewing / <i>Orientation</i>			r.p.m.	0,1 ↔ 0,9	

Allgemeine technische Daten

General technical data
Details techniques généraux

Konstruktionsgewicht Weight / <i>Poids de la grue</i>	kg	9.200	Ges. elektr. Leistung Motor power / <i>Puissance total</i>	kW	19
Gegengewicht Counterweight / <i>Contrepoids</i>	kg	15.000	Kabelquerschnitt Cable section / <i>Section du câble</i>	mm ²	5 x 10
Drehradius Slewing radius / <i>Rayon de giration</i>	m	2,5	Netzstrom Mains supply / <i>Réseau</i>	V/Hz	400/50
Max. Eckdruck Corner load / <i>Pression</i>	kN	128			
Spindelabstand Support basis / <i>Ecartement</i>	m	4,0x 4,0			